

E-Dragon Series

Pellet Fired Mobile Heating Platforms

“A mobile platform with independent heating capabilities”

With an internal closed water system, using one with circulation pump, expansion tank, automated air discharge valve and an optional wifi connectivity, the Eko-Dragon Series is a fully capable, independent heat venting system designed for a multitude of spaces and heat requirements.



Features



High Capacity Blowers:

Dragon series are equipped with two high capacity blowers with 180 degree manual rotational movement.



Complete and Compact:

Built in Expansion tanks guarantee the stability of flow and ensures safety. There is no need to connect the Dragon to any external water supply or other mechanical equipment.



Turnable Joints:

A user friendly design allows the blower heads to be turned with ease. The water pipes are placed inside this joint to prevent cluttering and ensure optimal health and safety compliance in the external structure.



Dragon Strength:

Designed to suit any working environment. A Reliable and Sturdy Construction ensures the long life of the unit.



'Plug and Play' Concept:

Dragon series are fully assembled at the factory. Simply plug, play and heat.



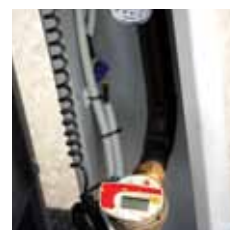
Flexibility:

Special Flex pipes are used in connection of blowers to allow easy turning of the heads.



Quality Ancillaries:

All equipments and ancillaries are in compliance with EU and international best practice standards.



Measurement is easy:

An optional Heat meter can be utilised to monitor heat and energy consumption.



Technical Specifications

DRAGON SERIES PELLET FIRED BOILER TECHNICAL SPECS		Unit	BOILER TYPE		
			DRAGON 23	DRAGON 40	DRAGON 60
CAPACITY	Nominal Heat Output	kW	23	40	60
		kcal/h	19,78	34,4	51,6
	Minimum Heat Output	kW	6,9	12	18
		kcal/h	5,934	10,32	15,48
BLOWERS	Air Heaters Capacity	kW	2x12	2x24	2x45
		kcal/h	2x10.500	2x20.640	2x39.000
	Fan Power	W	150	180	180
	Air Heater Dimensions (WxLxH)	mm	460x535x230	555x565x300	630x550x260
	Water Connections	inch	3/4"	1"	1"
OPERATING CONDITIONS	Safety Limit Temperature	°C	95		
	Max. Operating Temperature	°C	90		
	Min. Water Return Temperature	°C	55		
	Operating Pressure	bar	3		
	Boiler Test Pressure	bar	4,5		
	Electrical Connection	-	230 Vac , 50 Hz		
	Recommended Fuel Types	-	Ø6-8 mm mm high quality pellet		
MAIN DIMENSIONS	W ₁ - Base Width	mm	1500	1700	
	L ₁ - Base Depth	mm	1500	1700	
	H ₁ - Boiler Height	mm	1160	1360	
	Stack Size, ØD1 (Outer&Inner Diameter)	mm	130-125	150-146	
	H ₂ - Height of Stack Connection	mm	803	963	
	W ₂ - Width	mm	1500	1800	1920
	W ₃ - Max. Width	mm	1800	2250	2360
	H ₃ - Total Height	mm	2090	2340	
	Total Water Content of Boiler	lt	60	85	130
	Total Weight	kg	590	750	800
	Filling & Drain Connections	Diameter, ØD ₂	inch 1/2"		
Expansion Tank Volume	lt	12	24		
SILO	Standart Fuel Storage Volume	lt	300	500	
	W ₂ - Tank Width	mm	650	800	
	W ₂ - Tank Depth	mm	850	900	